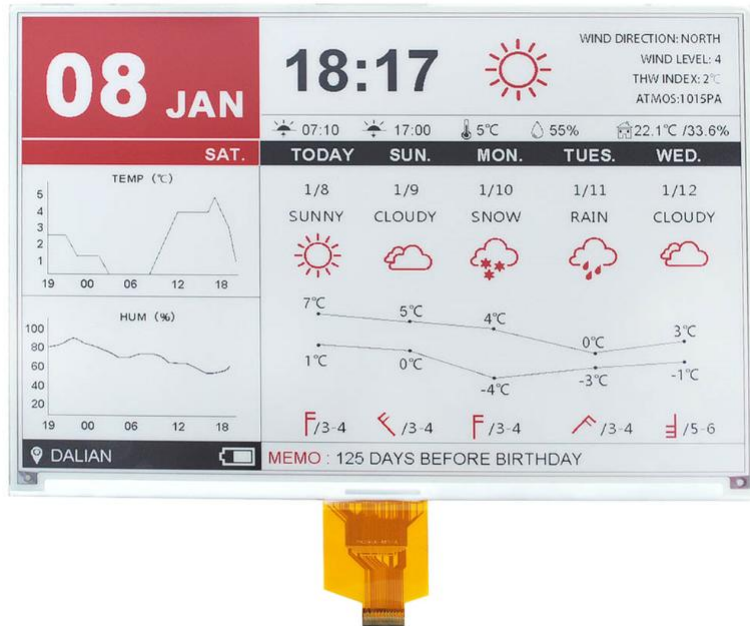


Picture Production and Bitmap Conversion for GDEM102Z90



一、 Make Picture

This screen supports three colors, black, white, and red are all standard colors. In practice, you can refer to the color chart of the Windows system's built-in drawing software. When creating images, you need to separate the 960 * 640 resolution black, white, and red images into two monochrome images: black, white, and red, white (red is replaced by black), and save the images in BMP or jpg format, as shown in Figure 1.

Conception:





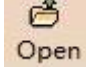
1. Monochrome: black, white 
2. Three colors: black, white, red/yellow 
3. Four colors: black, white, red, and yellow 
4. Seven colors: black, white, red, yellow, blue, green, orange 

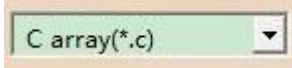


Figure 1, Image Separation Steps

二、 Bitmap Conversion


Bitmap conversion can be done using image2LCD software, which can be downloaded from the official website (<https://www.good-display.com>). The interface for setting bitmap conversion parameters is shown in Figure 2 and Figure 3. Three color E-paper needs to be converted twice, and the steps for converting black and white and red white image bitmaps are the same:

1. Open the image2LCD software and click the "Open" button , Import the image that needs to be converted;

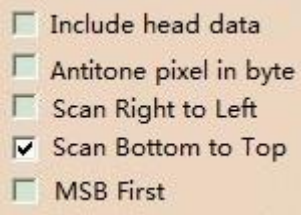
2. Output data type: Select "C array (*.c)" ;

3. Scanning mode: Select "Horizon Scan" ;


4. Output grayscale: Select "Monochrome" ;

5. Maximum width and height: Select "960" and "640", After selection, you need to click the arrow below to confirm ;

6. Select "Scan Bottom to Top" for these five

options ;

7. "Reverse Color" Selection ;

8. Click on 'Save' , Save the converted array to a file with an extension of ". C";

9. Finally, replace the corresponding array in the program with the array in the file ". C".

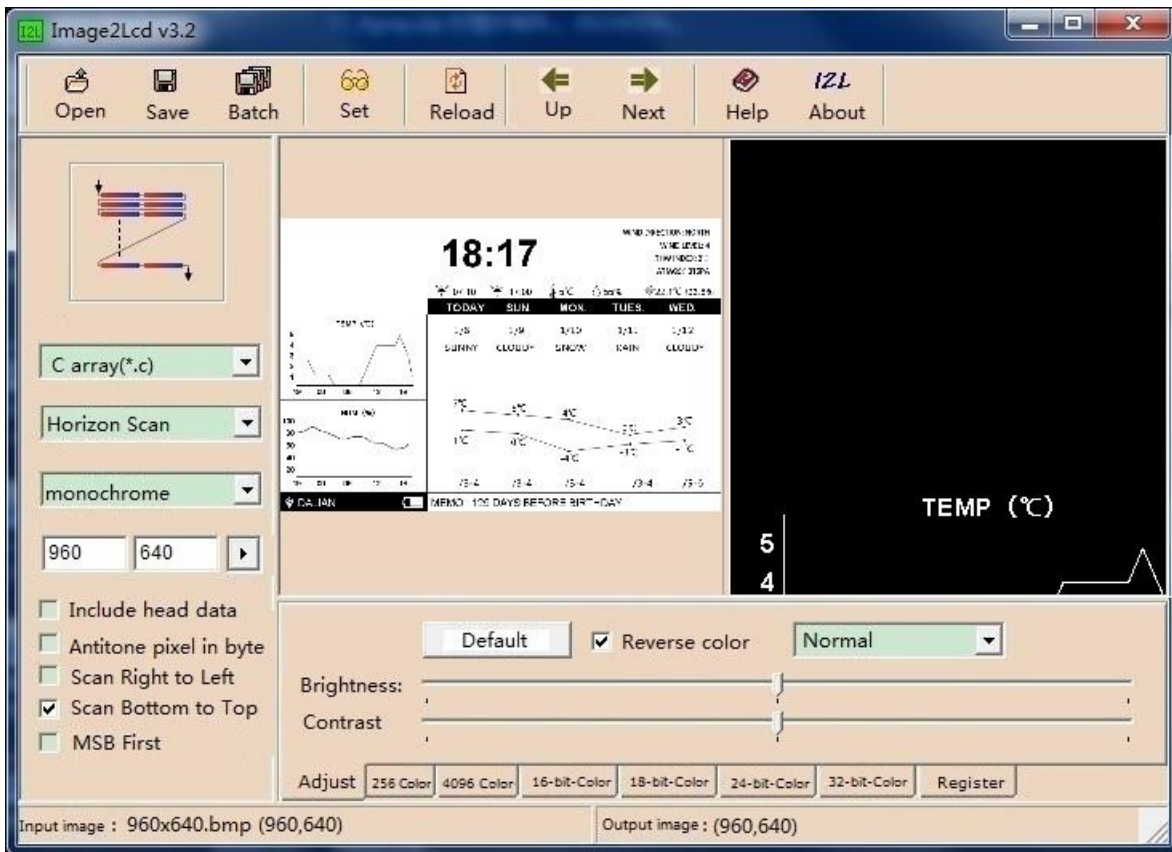


Figure 2, Black and white image settings

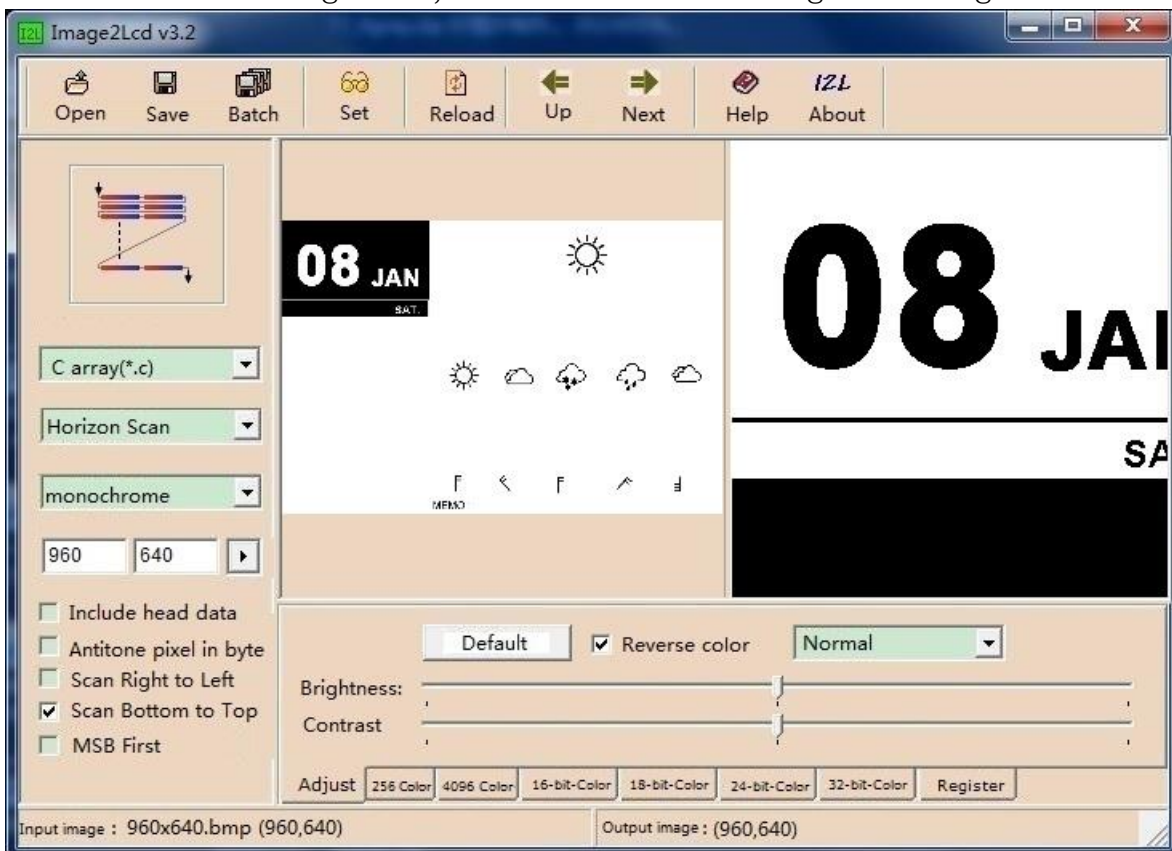


Figure 3, Red and white image settings